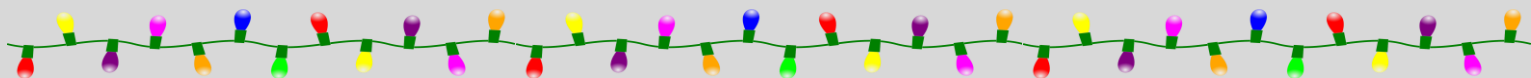


# Southwest Health & Human Services Medical Reserve Corps Newsletter



## 12 Days of Holiday Safety

**Day 1:** Never use lighted candles near trees or wreaths. Keep candles at least 12 inches away *anything* that burns.

**Day 2:** Keep poisonous plant out of reach for children and pets.

**Day 3:** Keep trees away from fireplaces, radiators and other heat sources.

**Day 4:** Make sure your tree has a stable platform.

**Day 5:** Choose an artificial tree that is labeled fire resistant!

**Day 6:** Plug only one heat producing item into an electrical outlet at a time.

**Day 7:** Check holiday lights for fraying, bare spots, gaps in the insulation or excessive kinking in the wire.

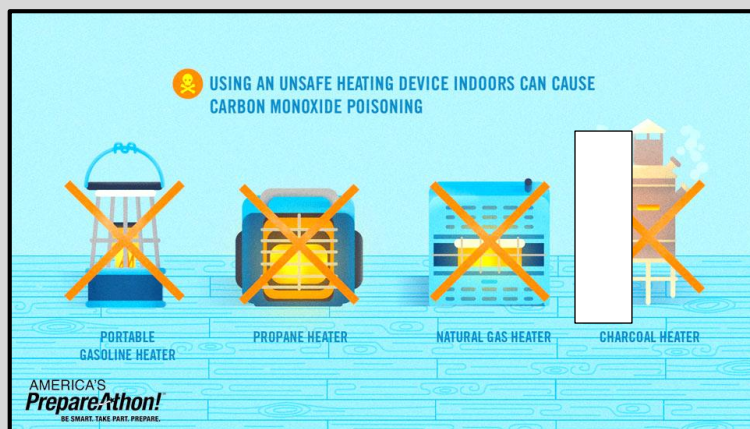
**Day 8:** Turn off all tree lights and decorations when not in use.

**Day 9:** When preparing a meal, wash hand, utensils sink and anything else that touches raw meat.

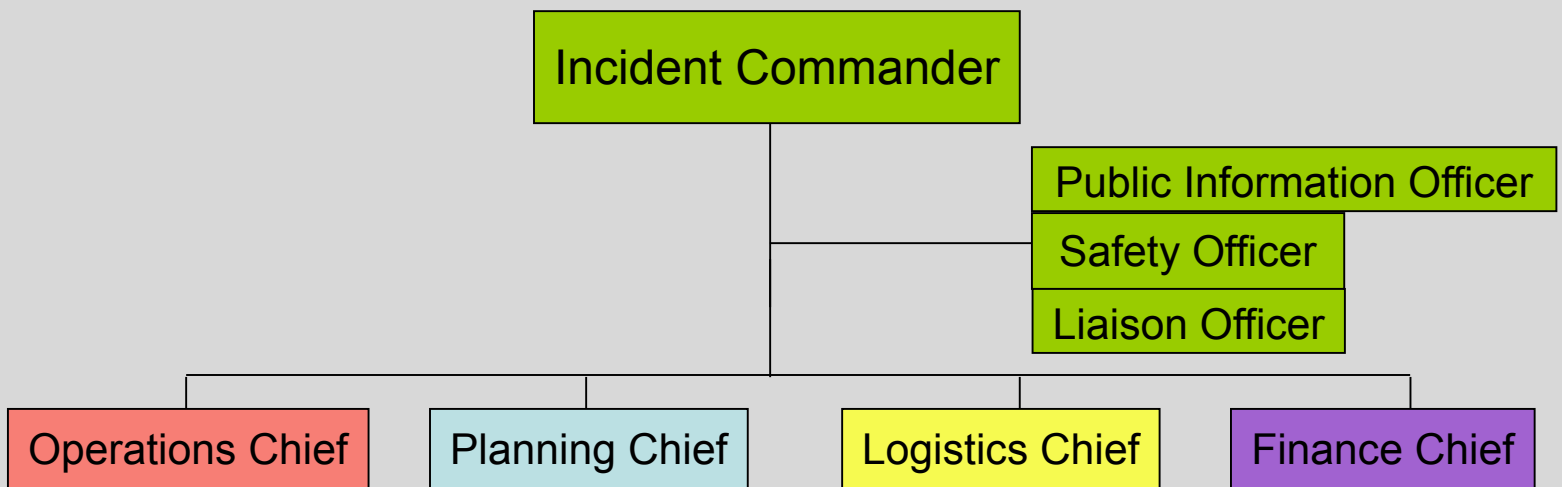
**Day 10:** Reheat leftovers to at least 165 degrees Fahrenheit.

**Day 11:** If using a natural tree, make sure it is well watered.

**Day 12:** Sign up for local emergency weather alerts on your cell phone.



# What is the Incident Command System?



The incident command system (ICS) is a standardized on scene emergency management structure. It allows agencies to work together using common terminology and operating procedures for controlling personnel, facilities, equipment, and communications at an incident scene. The above graph details the eight core sections within ICS.

The incident command system is put into place by organizations in the event of a small or large disaster when resources, outside partners and other agencies or communities are involved. Local public health and the MRC rely on ICS to properly manage events, exercises and real life emergencies.

**Incident Commander:** Individual responsible for all incident activities, including the development of strategies. The incident commander has overall authority and responsibility for conducting the emergency.

**Public Information Officer:** Responsible for communicating with the public and media or with other agencies.

**Safety Officer:** Responsible for monitoring and assessing safety hazards or unsafe situations and personnel safety.

**Liaison Officer:** Responsible for coordinating with representatives from assisting agencies and partners.

**Operations Chief:** Responsible for the developing and implementing strategies.

**Planning Chief:** Responsible for the collection, evaluation, and dissemination of information related to the incident, and for the preparation and documentation of all actions taken.

**Logistics Chief:** Responsible for providing facilities, services and materials in support of the incident.

**Finance Chief:** Responsible for all financial and cost related activities critical to the incident.